

Turret Rubber Mountings

Type RM

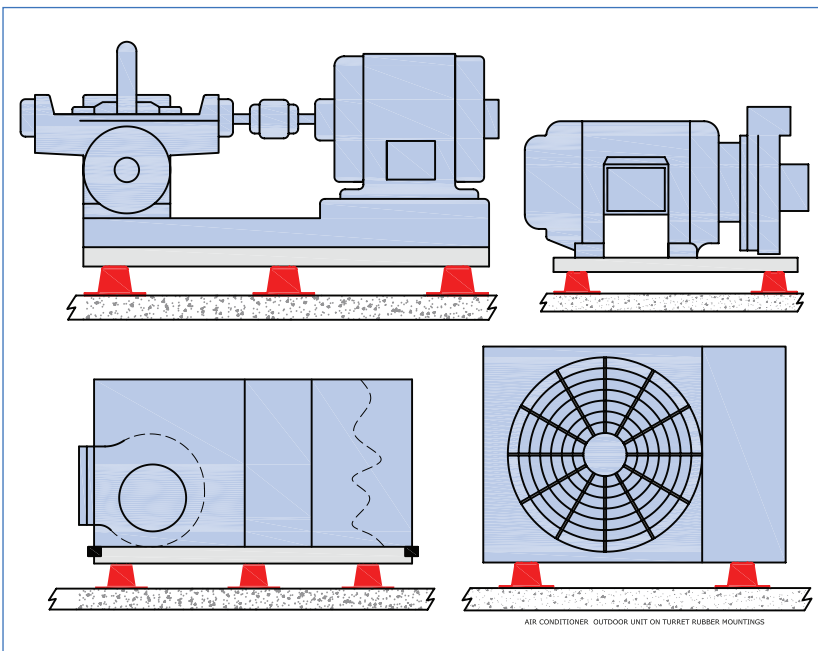
licensed in 1992 by
**CHRISTIE
& GREY**



RM rubber mountings are designed to provide superior attenuation of medium to high frequency vibration and noise emanating from a wide range of motor driven machines particularly axial and centrifugal fans. High resilience rubber with low dynamic to static stiffness ratio ensures maximum efficiency, good creep performance and long service life.

DESIGN FEATURES

- Moulded in first grade natural rubber with integral steel base and upper fixing boss.
- Also available with oil & environment resistant durable Neoprene.
- Manufactured in three sizes, each available in three rubber compounds identified by a colour spot.
- Static deflections of up to 8 mm with loads from 5 kg to 400 kg.
- Optional height adjusters also available.

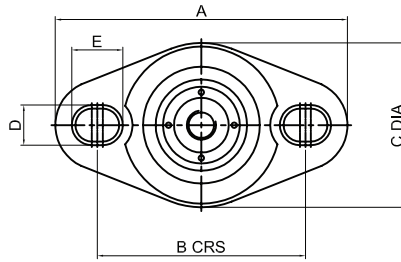
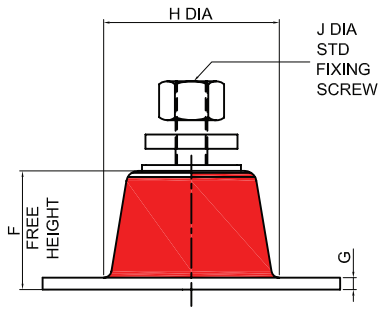


TYPICAL APPLICATIONS

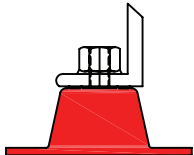
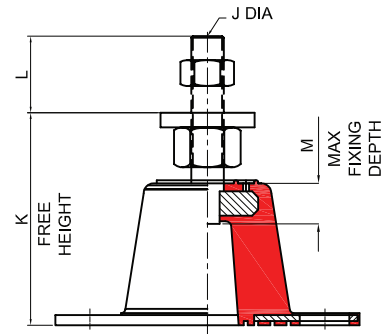
- Axial & Centrifugal Fans
- Air Handling Units
- Air conditioning Equipments
- Packaged Air Conditioners
- Floating Floors
- Generators
- Mobile Equipments
- Pumps
- Refrigeration Plants
- Rotary and Multi Cylinder Compressors

Note : Turret mountings should not be used on machines exhibiting high out of balance forces without restraining bolt.

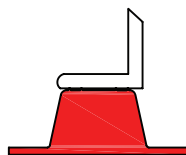
STANDARD PART



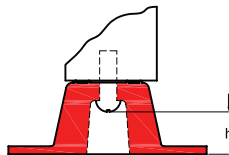
HEIGHT ADJUSTABLE VARIANT (HA)



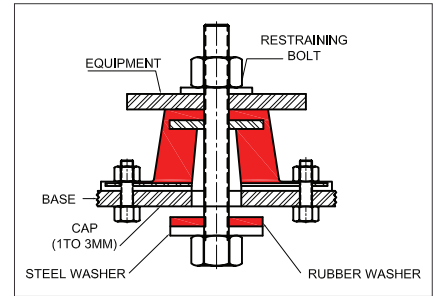
If bolting is preferred
Mountings are furnished with a tapped hole in the centre. This enables the equipment to be bolted securely to the mounting.



No bolting required
Mountings may be used without bolting under machines having no lateral or severe vertical motion.



If bolt hole is inaccessible
Use set screw threaded up from under side, "h" must exceed maximum mounting deflection.



Mobile Mounting

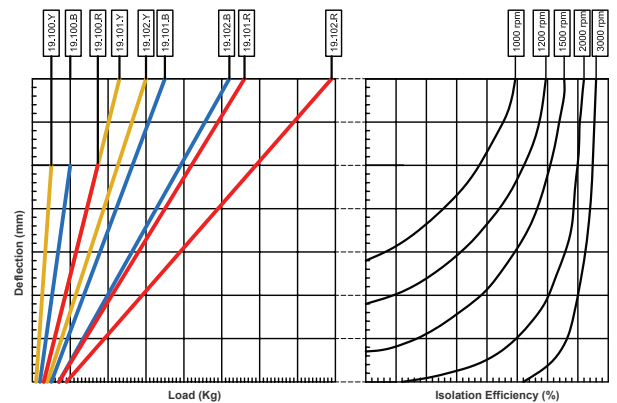
A restraining bolt is required for mobile and marine applications to control inertia forces. Mobile mountings have the same load deflection characteristics as the stationary Mountings.

TECHNICAL CHARACTERISTICS

PART NO.	COLOUR CODE	RATED LOAD (kg)	DEFLECTION AT RATED LOAD (mm)	NOMINAL DIMENSIONS (mm)											APPROX. WT. (kg)	
				A	B	C	D	E	F	G	H	J	K	L		M
19.100.Y	YELLOW	28	6	80	57	45	9	12	32	5	41	M8X20	42	13	18	0.11
19.100.B	BLUE	50														
19.100.R	RED	80														
19.101.Y	YELLOW	110	8	95	71	60	9	14	45	5	56	M10X25	56	18	28	0.25
19.101.B	BLUE	180														
19.101.R	RED	280														
19.102.Y	YELLOW	150	8	150	115	86	11	22	70	6	82	M12X30	83	27	38	0.73
19.102.B	BLUE	260														
19.102.R	RED	400														

Load / Deflection and Isolation Efficiency Graphs

- Tolerance on Deflection at Rated Load is $\pm 15\%$
- Above part number requires standard upper fixing screw size J
- For height adjustable variant add suffix HA after part number
- Maximum height adjustment available is 10mm with .HA variant



Isolation efficiency is based on dynamic rather than static stiffness for accurate calculation of system performance.